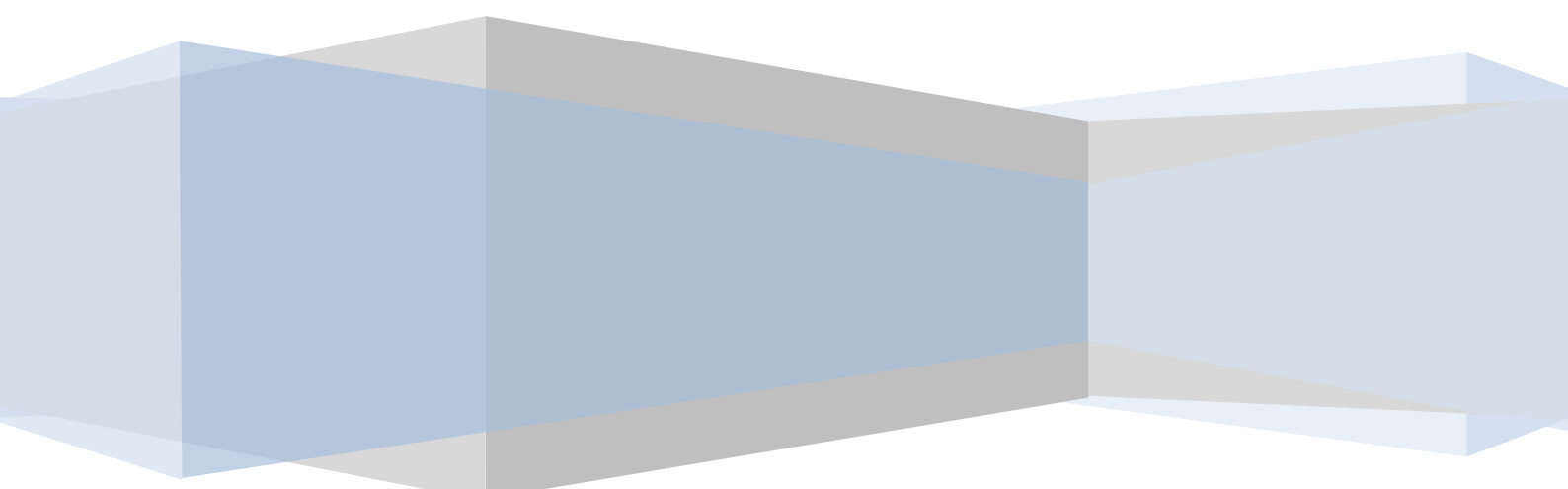


Building Complex/Community Add-on

Realtyna Inc.



Contents of this manual are applicable to Complex Add-on version 1.x. If you have an older version of the complex add-on, sections of this manual may not apply. Specifically the customizations on your website and the different software version you may use. Manuals are updated monthly and are available on our website. The complex add-on is only installable for RPL7.x. This manual may be changed without prior notice.

Table of Contents

Introduction	III
Installation & Configurations	4
Complex Wizard & Complex Manager	5
Complex Wizard	5
Complex Manager	6
Complex Show & Complex Listing.....	7
Complex Show.....	7
Complex Listing	8
Complex Module	8
Appendix A-Complex Update & Changelog	10
Appendix B-Module Position Differences to Property Pages	11

Introduction

The complex add-on extends the capability of the PropertyListing of RPL to list building complexes and communities and condos. The major difference between a property and a complex is their data type. For instance, a property has one price, but a complex can have a range of prices, such as \$100,000 to \$400,000; or a property has a definite number of bedrooms but a complex may have properties with one to four bedrooms. The complex add-on gives almost the same functionalities as with properties, except it offers these extensions.

Another feature added to RPL after the complex add-on is installed is the ability to set a parent for properties. Once a complex is defined, you can set that complex as the parent of properties. If you have a complex which contains three types of properties, such as two, three, and four bedroom properties; each of these properties has their own characteristics, but all are in one complex. Begin by creating a complex, saying it has properties by 2~4 bedrooms, then define three properties with two, three, and four bedrooms each and add their data. Then, assign the complex as the parent of these properties.

It is possible to list all complexes, or all properties beyond a complex. It is also possible to use the same search module of RPL to search through complex features.. Also there is a module, which makes it possible to show a list of complexes on top of property listing. All of these are explained in this manual.

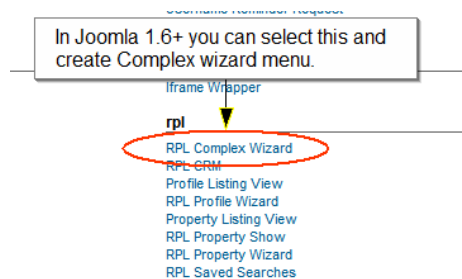
Installation & Configurations

The complex add-on is composed of an add-on part and a module. Both are installed uniquely and at the same time. You can install the package like any other RPL7 add-on package through the Joomla installer.

After installation is complete, you can set up needed menus related to complexes from the Joomla menu section. Needed menus are:

1. Complex wizard (for adding new complexes)
2. Complex manager (for managing and editing existing complexes)
3. Complex listing

In Joomla 1.6+ you can add the complex wizard through RPL menus. See the image below:

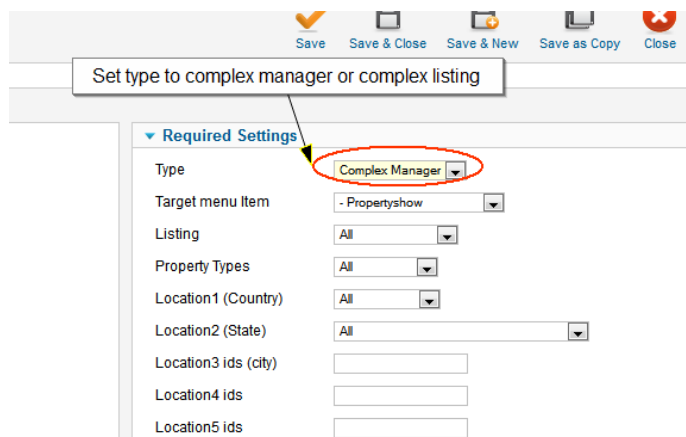


In Joomla 1.5, use an extra link option as the menu with the following link for it:

`index.php?option=com_rpl&view=addon_complex_wizard`

To set up the complex listing or complex manager, like the PropertyManager and PropertyListing, it can be set from the PropertyListing view. Set the type as complex manager or complex Listing. See the image to the right.

Important Remark: Remember to set the access level of complex manager and complex wizard in the menu to registered users.

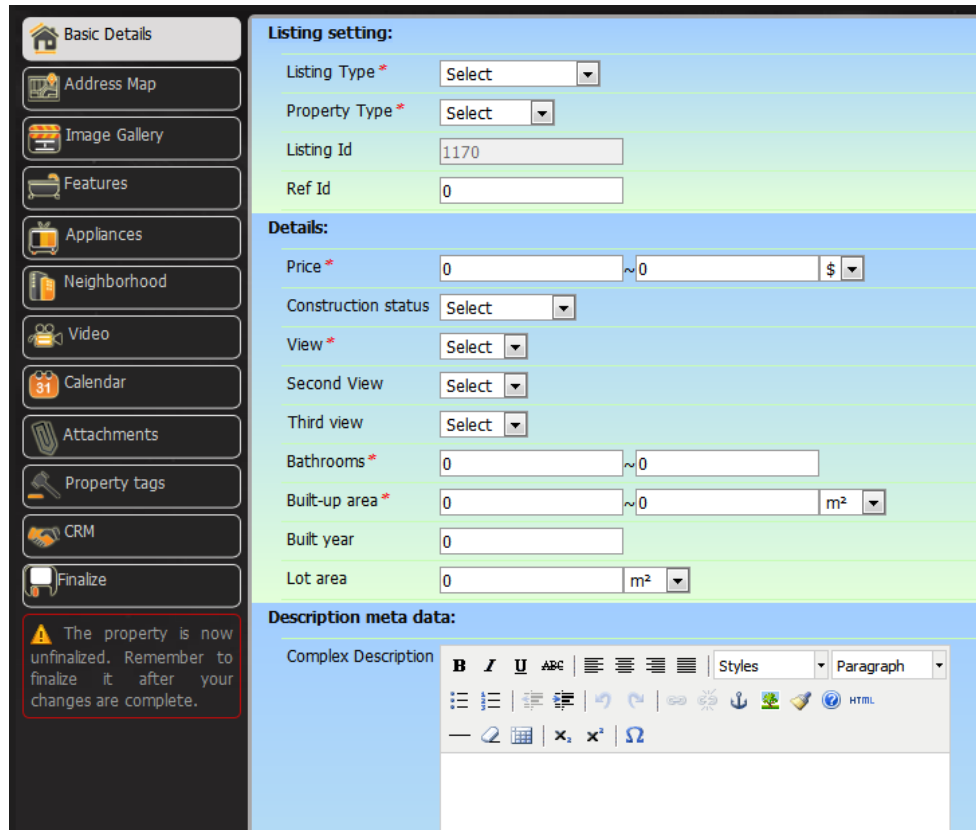


Important Remark: After installation of the complex add-on, the complex manager and complex wizard have an access that is added to the user management, called the `addon_complex_wizard`. For complex listing, any group of users accessing listing can browse complex listing as well.

Complex Wizard & Complex Manager

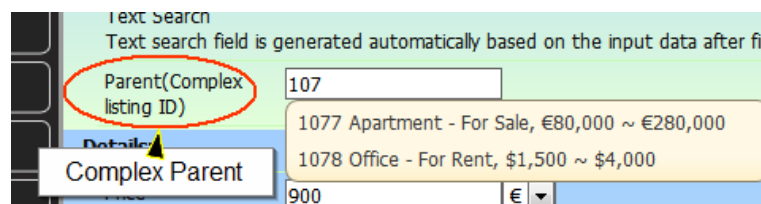
Complex Wizard

After creating the complex wizard, you can add complexes through its wizard. The complex wizard is almost like the PropertyWizard, but the difference is that some data are range-like.



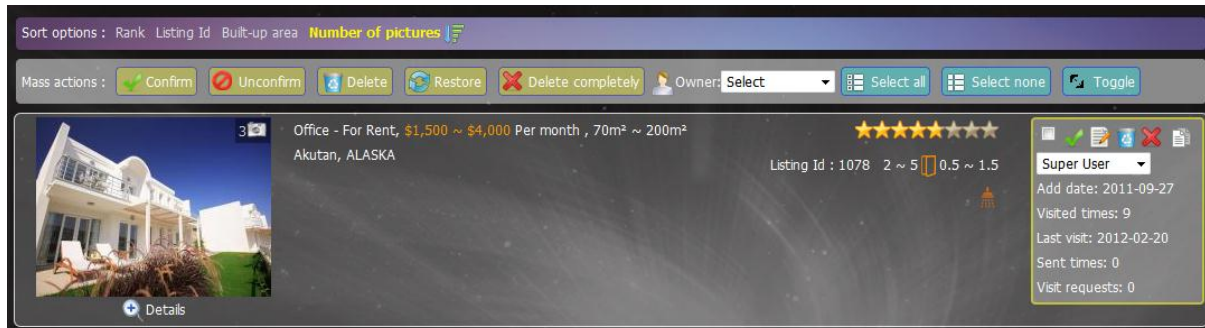
Data fields may be read from the property's FLEX data such as views, listings, or property types. As shown in the image above, it is possible to set multiple views for a complex. It is important to understand that adding a field through FLEX adds fields only for properties, not for complexes. The complex data structure has no FLEX--like capability, but a complex has almost all the fields present in the core of RPL for a property. Fields are added such as construction status.

After the complex add-on is installed, a new field is added to the PropertyWizard too. You can specify the complex parent of that property. To select from a list, type the first digits of the listing ID of the related complex and a list of complexes will be shown with their primary info. See the image below:



Complex Manager

The complex manager is also very similar to the PropertyManager. As it is shown in the image below, the only difference is that the price, number of bedrooms, and number of bathrooms are shown as ranges.



All other options and functions are the same as PropertyManager. A user with the `addon_complex_wizard` can access the complex manager and complex wizard). A user with access of property confirmation can confirm his complexes as well.

Complex Show & Complex Listing

Complex Show

The complex show is like PropertyShow. There are some minor differences other than range-like data.

Complex links

- Request a visit
- Send this property to a friend
- Share via facebook
- List of properties (22)

Complex Agent's info

Super User
max@realtyna.com
www.realtyna.com
1.347.482.2110
1.347.482.2110
1.347.482.2110
REALTYNA
Agent's languages: Arabic (Algeria), English (Canada)

Clicking on this link shows all properties related to this complex

Complex Attachments
No attachments

Apartment Complex - For Sale, €80,000 ~ €280,000 , 120Sqft ~ 250Sqft
Albany, NEW YORK
Listing Id : 1077 2 ~ 4 1 ~ 3

Pictures Google map Street view

Basic Details

Listing Type : For Sale	Property Type : Apartment
Listing Id : 1077	Ref Id : 0
Price : €80000 ~ €280000	View : Garden
Second View : Street	Bedrooms : 2 ~ 4

As illustrated in the image above, if the complex has some properties related to it, a link will be available that will show the count of properties available in RPL properties related to this complex. By clicking on this link, a PropertyListing page is shown, with the complex minimum details on the top¹.

Related Complexes

Apartment - For Sale, €80,000 ~ €280,000 , 120Sqft ~ 250Sqft
Albany, NEW YORK
Listing Id : 1077 2

Request a visit Send this Share Complex details List of properties (21)

Sort options : Rank Listing Id Built-up area Number of pictures

Office - For Sale, \$99,000 €80,000 , 1231m²
9085, Street, California City, CALIFORNIA
Listing Id

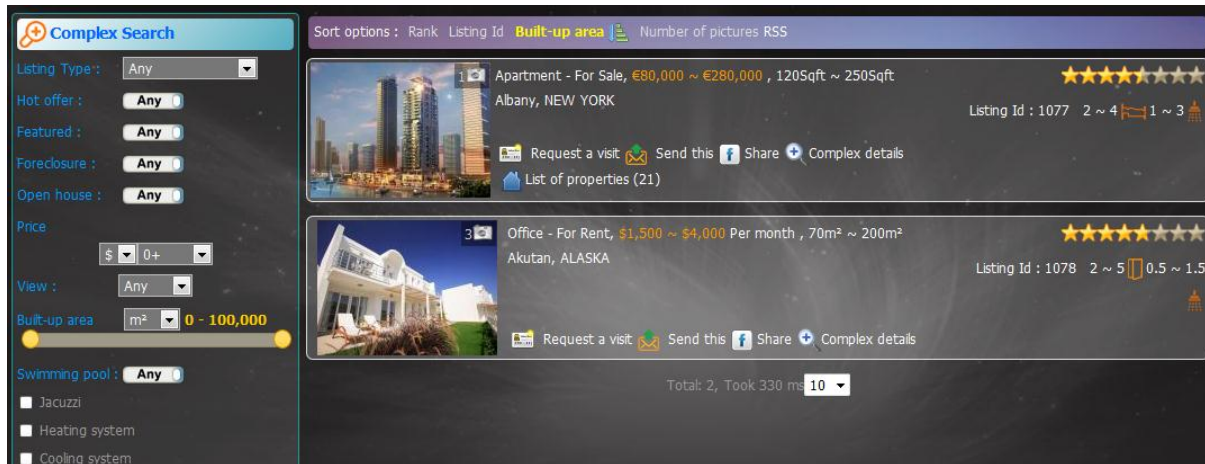
Contact for this property Request a visit Send this Remove from bookmarks Details
Find Direction

Office - For Sale, \$99,000 €80,000 , 1231m²
9085, Street, California City, CALIFORNIA
Listing Id

¹ If the complex module is not disabled.

Complex Listing

You can create a menu to show available complexes on your website. A complex listing can have all the options of listing like Ajax pagination, listing type, property type, narrowing of results, etc. You can even set up a property search module for complexes and it will work just as expected. But in this case, you should only enable items that are present in complexes².



Here is an important remark about the range-like fields search. As an example:

You search for properties (complexes) having a price range between \$100,000 and \$150,000. The following complexes are expected to be in the results:

- \$80,000 ~ \$110,000
- \$110,000 ~ \$200,000
- \$80,000 ~ \$200,000
- \$80,000 ~ \$100,000
- \$150,000 ~ \$300,000

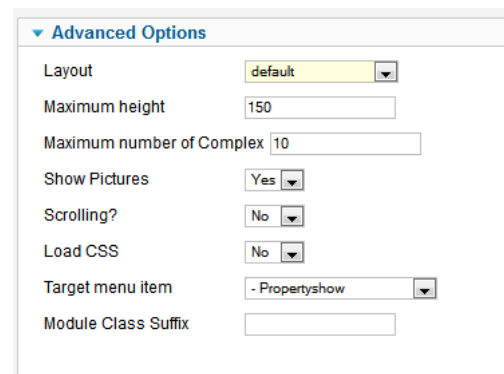
The same goes for any range-like item.

Complex Module

The complex module is designed to show a semi-like complex listing in module positions. By default installation of the complex add-on an instance of this module is set to RPL_Plisting_top. This way whenever properties are listed, complexes are listed too. This is also used for showing a list of properties related to a complex.

The complex module has some options worth mentioning:

- Layout: Use this to develop customized



² If you add some field in FLEX (which is not available then in complexes), and then use that as a search parameter and the user does not narrow the search based on that parameter, search yet does work on complexes, but if the user narrow the result for that since no complex has that filed, no results are returned.

template layouts

- Maximum Height: Applicable when setting scrolling as yes
- Maximum Number of Complex: Shows the maximum number of complexes
- Show Pictures: If set to no, pictures of complexes are not shown (in the module position they are not shown, but in complex listing they are shown)
- Scrolling: If set to yes, the height of module is fixed to the value of maximum height and a scroll is shown to see all complexes (up to the maximum number specified)
- Load CSS: If set yes, the CSS and the complex listing are loaded. Set this to no if the property listing CSS are the same as complex listing
- Target Menu Item: The target menu to show clicked complexes

Appendix A-Complex Update & Changelog

Complex update notifications are shown in the same way as RPL; in the backend home in the changelogs section. It is just as important to mention that RPL and its add-ons check for updates every 24 hours and add-ons check separately. To trigger the complex update, go to the complex wizard page in the frontend and refresh the backend page. If any updates are available, the notification for update is shown.

Complex add-on v1.1 changelog (2/19/2012)

- Added thousand separators for specified fields
- Made fully compatible with RPL7.2.7
- Added scrolling/auto height to the module

Complex add-on v1.0 changelog (10/01/2011)

- First release using RPL7 SDK

Appendix B-Module Position Differences to Property Pages

As mentioned throughout this manual, PropertyListing and complex listing are very similar. The same goes for PropertyShow and complex show, but they are using different templates.³ Accordingly, not all RPL internal module positions that are available in PropertyShow are available in complex show and vice versa. However, there are similar positions which have a small name difference; see the list in the image below. This data can be useful from the developmental point of view.

Template	Property	Complex
PropertyShow/ComplexShow	RPL_Pshow_left	RPL_Cshow_left
PropertyListing/ComplexListing	RPL_Plisting_links	RPL_Clisting_links
PropertyListing/ComplexListing	RPL_Plisting_images	RPL_Clisting_images

³ Unlike PropertyShow and PropertyListing, you cannot manage the template that complex show and complex listing are using from the RPL backend template manager. But you can set them manually from the database from rpl_templates table.